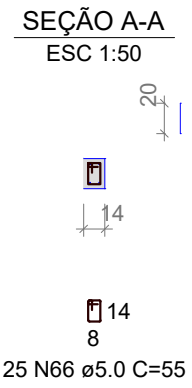
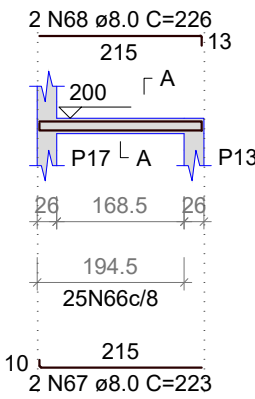


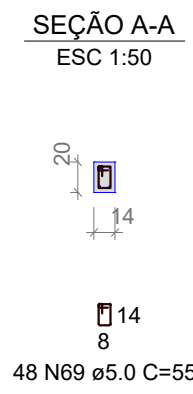
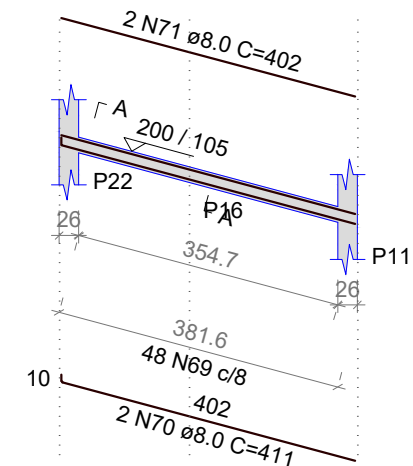
V21 (14 x 20)

ESC 1:100



V22 (14 x 20)

ESC 1:100



VIGAS TOPO

RESUMO DO AÇO - VIGAS TOPO

| AÇO             | DIAM (mm) | C.TOTAL (m) | QUANT + 10% (Barras) | UNIT | PESO + 10% (kg) |
|-----------------|-----------|-------------|----------------------|------|-----------------|
| CA50            | 8.0       | 280.8       | 26                   | 12 m | 121.9           |
| CA60            | 10.0      | 15.8        | 2                    | 12 m | 10.7            |
| CA60            | 5.0       | 322.6       | 30                   | 12 m | 54.7            |
| PESO TOTAL (kg) |           |             |                      |      |                 |
| CA50            | 132.6     |             |                      |      |                 |
| CA60            | 54.7      |             |                      |      |                 |

Volume de concreto (C-25) = 2.35 m³  
Área de forma = 42.25 m²

DETALHE DA ARMADURA DE SUPERIOR DE CONTINUIDADE DA LAJE E MONTAGEM DA ARMADURA DE DISTRIBUIÇÃO

